

ADDENDUM #1

SouthWest Transit 2017 Floor Repairs SOUTHWEST TRANSIT Eden Prairie, Minnesota

July 26, 2017

By:

**WALKER RESTORATION CONSULTANTS
1660 South Highway 100, Suite 545
Minneapolis, MN 55416
(952) 595-9616**

This Addendum No.1 is added to and shall become a part of the Construction Documents dated May 5, 2017.

The Contractor will be required to furnish or delete, as the case may be, all materials, labor, equipment, and supervision required to properly execute the Work described herein. The applicable provisions of the Bid Documents shall govern all Work included unless specifically noted otherwise in this Addendum.

The Contractor and all subcontractors shall incorporate all items noted in the Addendum into the original drawings and specifications for this project.

The Contractor shall acknowledge receipt of this addendum in its Bid Proposal to the Owner.

The following is included:

DESCRIPTION:

CLARIFICATIONS

1. Field questions during Pre-Bid Meeting:
 - A. Should the underside cracks be epoxy injected or chemical grouted?
 1. The cracks should be chemical grouted, as specified in the construction documents.
 - B. Please provide the Bar Lock quantity?
 1. Please refer to details 3/R501 – 5/R501 for size and spacing of bars and Plan detail 6/R501 for dimensions to determine Bar Lock quantity.

SPECIFICATIONS

1. Insert following into specification section 020010 – Work Items:

WI 35.1 CMU PARTIAL WALL REPLACEMENT

- A. Scope of Work

1. Work consists of furnishing all labor, materials, equipment, supervision and incidentals necessary for local CMU removal and replacement due to full depth floor repairs. Refer to Detail 35.1 for specific requirements.

B. Materials

1. CMU shall be $f'_m = 2,000$ PSI.
2. Mortar shall be Type S.
3. Concrete core fill for wall cells and bond beams shall be $f'_c = 3,000$ PSI.

C. Execution

1. Contractor shall locate and mark all CMU to be replaced. Engineer/Architect shall verify replacement locations prior to start of Work.
2. Contractor shall remove all CMU as required to complete full depth concrete repairs.
3. New CMU shall be reinforced to match existing. Provide new dowels to floor as necessary.
4. Core-fill CMU wall to match existing and match bond beam at top of wall with existing.
5. Prior to initial set of mortar, tool joints to match existing.
6. Allow 3 to 7 days for mortar to harden prior to cleaning.
7. Dispose of all accumulated material and leave premises in clean condition.
8. Masonry surfaces that become dirty or smeared during joint cutting and repointing of joint surfaces shall be cleaned with bristle brushes and plain water.
9. Unnecessary damage to surrounding construction shall be repaired by Contractor at no cost to Owner.

2. Replace Bid Form with attached Bid Form with updated quantities.

DETAILS AND DRAWINGS

1. 6/R501

- A. Dimensions were added between gridlines and at openings.

2. 35.1/R501

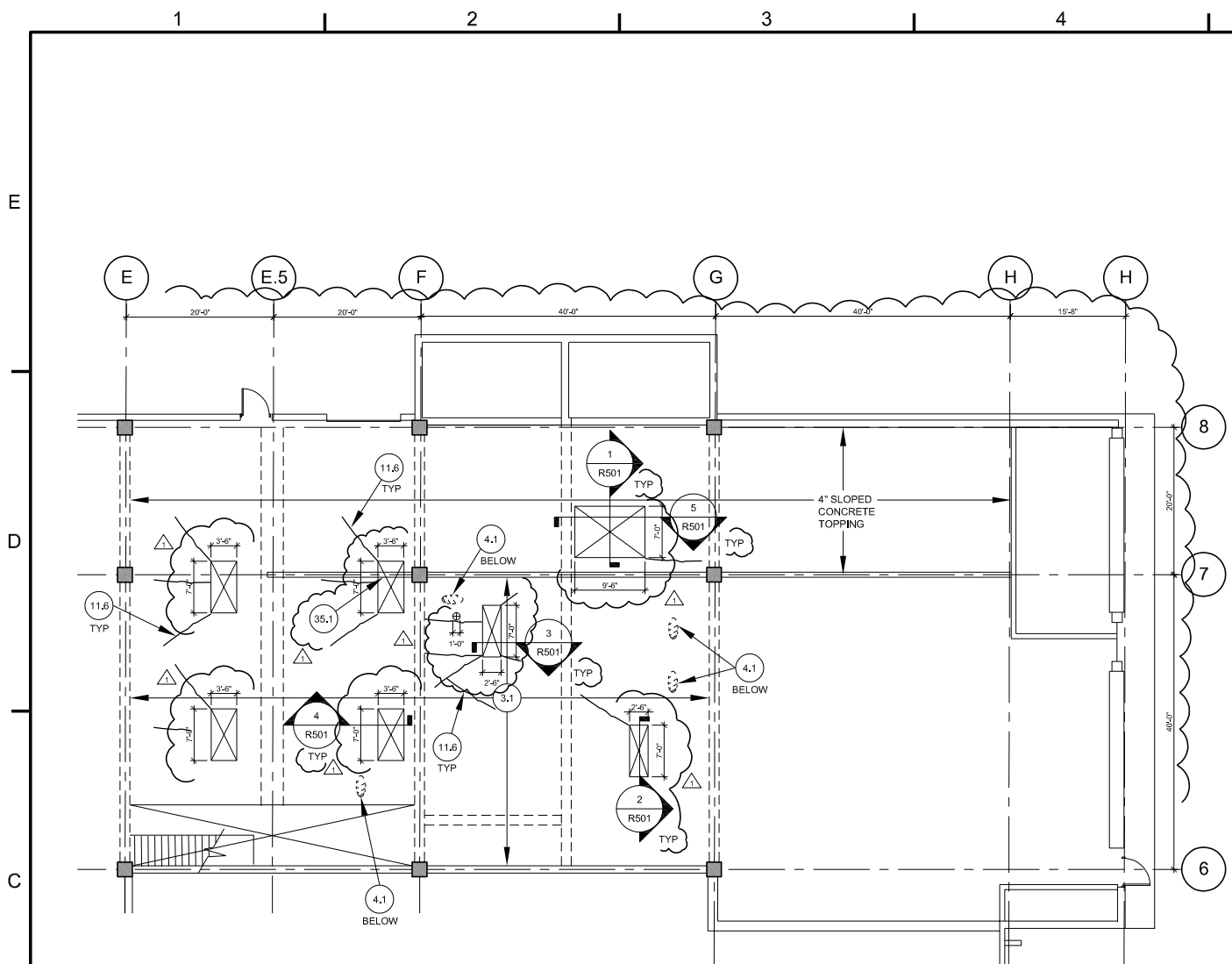
- A. Add detail for removal and replacement of CMU as necessary to perform full depth concrete repairs.

ATTACHMENTS:

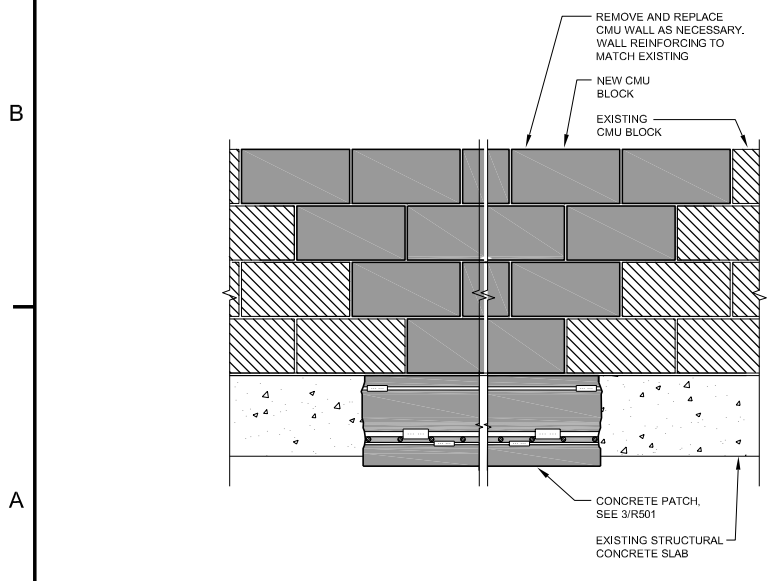
1. Sheet R501 with bubbled changes.
2. Updated Bid Form

END OF ADDENDUM

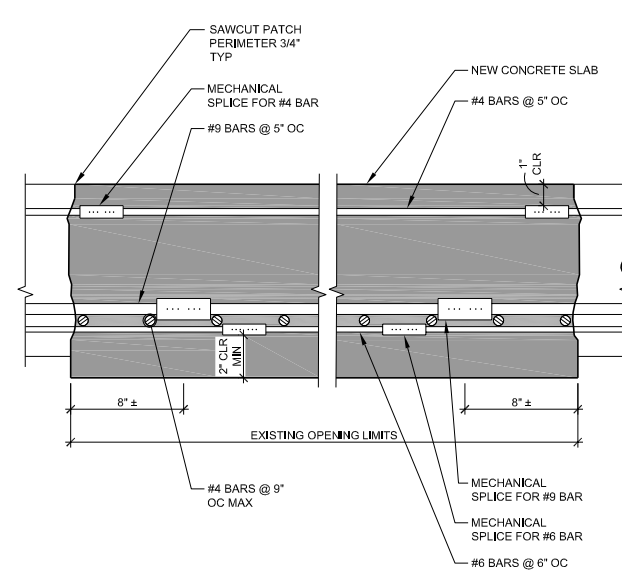
J:\21-4272-00-SWT_EP_GARAGE_FLOOR\CAD\REST14272-R501.DWG 7/26/2017 11:24:15 AM MASTEL USA



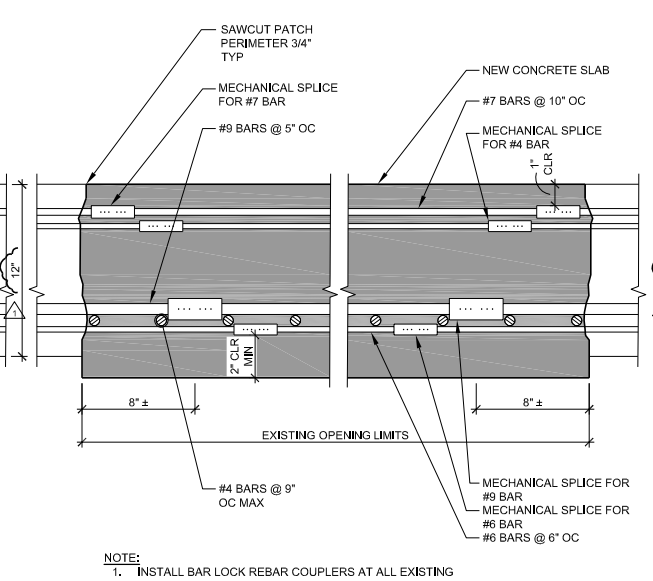
6 PARTIAL FIRST FLOOR PLAN



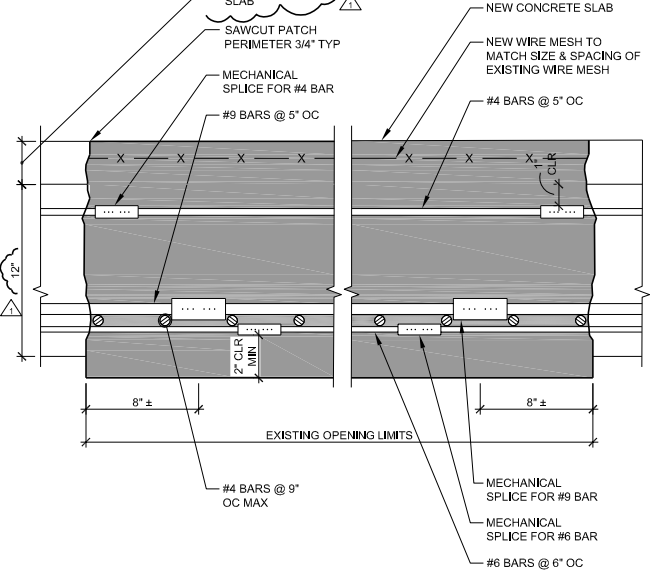
35.1 CMU PARTIAL WALL REPLACEMENT



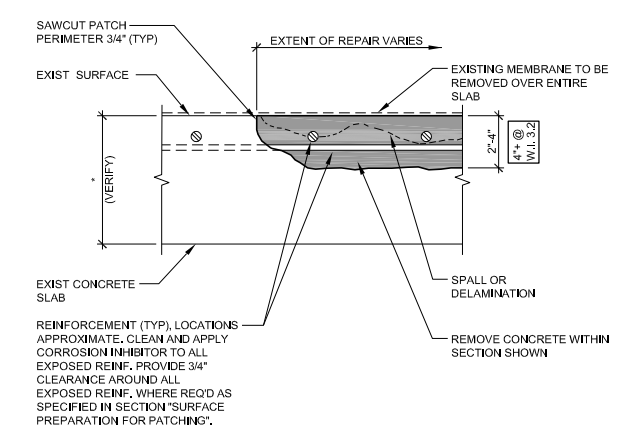
3 TYPICAL SLAB REPAIR @ MIDSPAN OF SLAB



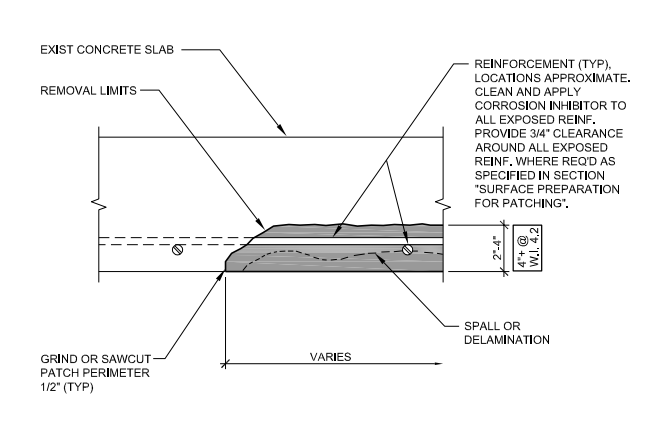
4 TYPICAL SLAB REPAIR OVER SUPPORT



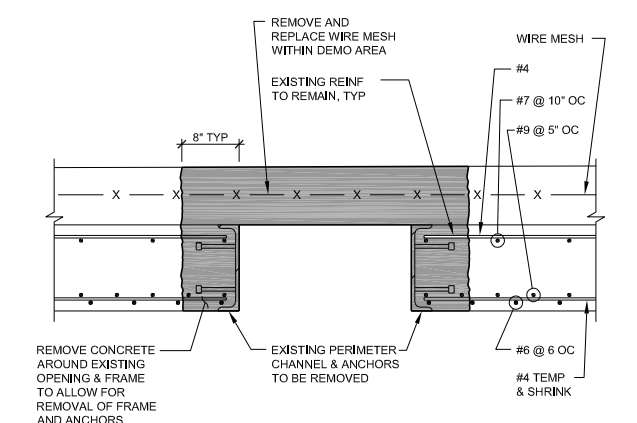
5 TYPICAL SLAB REPAIR W/ TOPPING



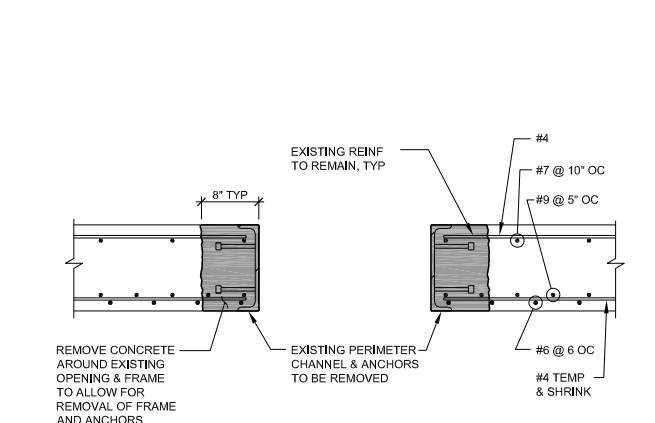
3.1 3.2 FLOOR REPAIR - PARTIAL DEPTH



4.1 4.2 CEILING REPAIR-PARTIAL DEPTH



1 DEMO @ ABANDONED SLAB OPENING



2 DEMO @ ABANDONED SLAB OPENING

NOTE:
1. INSTALL BAR LOCK REBAR COUPLERS AT ALL EXISTING REINFORCING. INSTALL IN ACCORDANCE WITH MANUFACTURERS RECOMMENDATIONS.

WALKER
RESTORATION CONSULTANTS
1660 South Highway 100
Suite 145
Minneapolis, MN 55416
855.256.0151
www.walkerrestoration.com

I hereby certify that these drawings were prepared by me or under my supervision and that I am duly licensed Professional Engineer in the State of Minnesota.
License No. 59914 Date: 05/03/17
Patrick Lewis, P.E.

SOUTHWEST TRANSIT
2017 FLOOR REPAIRS
EDEN PRAIRIE
MINNESOTA

MARK	DATE	DESCRIPTION	ISSUE
	07-26-2017	OWNER REVIEW	
	03-31-2017	OWNER REVIEW	

PROJECT NO: 21-4272.00
DRAWN BY: LPM
CHECKED BY:

SHEET TITLE:
PARTIAL FIRST FLOOR PLAN & REPAIR DETAILS

R501

WORK ITEM	DESCRIPTION	UNITS	QUANTITY	UNIT PRICE	EXTENSION	CALCULATED EXTENSION
PART I: GENERAL REQUIREMENTS / PRELIMINARY MATTERS						
1.0 GENERAL REQUIREMENTS⁽¹⁾						
1.1	Project Mobilization	L.S.	1		\$	\$ -
1.2	Concrete Formwork	Incidental			\$	\$ -
1.3	Concrete Shores and Reshores	Incidental			\$	\$ -
1.4	Concrete Reinforcement	Incidental			\$	\$ -
1.5	Temporary Signage	Incidental			\$	\$ -
PART II: CONCRETE FLOOR / CEILING SURFACES						
2.0 FLOOR SURFACE PREPARATION						
2.1	Floor Preparation - Scarification	Incidental			\$	\$ -
2.2	Floor Preparation - Partial Depth / Shallow	Incidental			\$	\$ -
3.0 CONCRETE FLOOR REPAIR						
3.1	Floor Repair - Partial Depth / Shallow	S.F.	315		\$	\$ -
3.3	Floor Repair - Full Depth	S.F.	220		\$	\$ -
4.0 CONCRETE CEILING REPAIR						
4.1	Ceiling Repair - Partial Depth / Shallow	S.F.	60		\$	\$ -
PART IV: CRACKS AND JOINTS						
11.0 CRACK AND JOINT REPAIR						
11.6	Chemical Injection Grouting	L.F.	300		\$	\$ -
PART VIII: ARCHITECTURAL REPAIRS						
35.0 BRICK / MASONRY REPAIRS						
35.1	CMU Partial Wall Replacement	S.F.	20		\$	\$ -
TOTAL \$						-